

2021- 2022 HEALTH SCIENCES EQUITY & DIVERSITY LUNCH & LEARN SERIES

Decolonizing Access to Higher Education

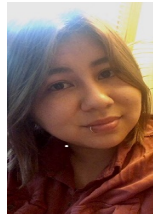
Wednesday, October 20
12:00 to 1:00 pm



Kala Kimberly Cornelius



Danielle Yancey



Haley Burkhardt



Jeneile Luebke

Kala Kimberly Cornelius is from the Oneida and Menominee Nations. She grew up on the Oneida reservation, and worked her entire nursing career in tribal health serving her community. She received her BSN from UW Oshkosh, MSN in Nurse Education from Bellin College, and a DNP degree from UW Madison. Kala currently serves as one of the STREAM Program Co-Directors in the School of Nursing, and provides holistic support to Native nursing students.

Danielle Yancey (Menominee/Santee) has worked in public service for nearly twenty years focusing on programs that promote social justice, education access, and equity. Currently, she serves as the director for the Native American Center for Health Professions at the School of Medicine and Public Health at the University of Wisconsin-Madison. Danielle grew up on the Menominee Indian reservation in north central Wisconsin. She is an alumna of the University of Wisconsin-Madison with undergraduate degrees in women's studies and social welfare, Master of Science in urban and regional planning, and holds a sustainability leadership graduate certificate from Edgewood College.

Haley Burkhardt is the STREAM Coordinator at UW-Madison's School of Nursing. She is St. Croix Chippewa and Mississippi Choctaw. She received her BA and MS from UW-Madison in Anthropology focusing in biological anthropology, with certificates in Archaeology and American Indian Studies.

Jeneile Luebke PhD, RN is an Anna Julia Cooper Post-Doctoral Nurse Research Fellow at the University of Wisconsin-Madison, School of Nursing. She received her early nursing degrees (LPN and ADN) in Bemidji, Minnesota, and her BS and MS degrees in Nursing from the University of Wisconsin- Madison, and her PhD at the University of Wisconsin-Milwaukee. She's an enrolled member of Bad River Band of Lake Superior Chippewa Indians. Her ancestry includes Metis, St. Croix and Lac Courte Oreilles Chippewa, French, and German. Her area of research and expertise include gender-based violence in the lives of Indigenous women, community health and utilization and application of postcolonial and Indigenous feminist frameworks. She is a key part of a team of multi-site researchers who are involved in several community engaged research and service grants that aim to better understand the lived experiences of gender-based violence, as well as advocating for survivor-led, trauma informed, and culturally safe interventions and options for BIPOC survivors of gender-based violence. Her other current work focuses on the impacts of gender-based violence on the health and wellbeing of Indigenous women and girls, particularly focusing upon the relationship between land violence and gender-based violence.



JOINTLY ACCREDITED PROVIDER
INTERPROFESSIONAL CONTINUING EDUCATION

In support of improving patient care, the University of Wisconsin-Madison ICEP is jointly accredited by the Accreditation Council for Continuing Medical Education (ACCME), the Accreditation Council for Pharmacy Education (ACPE), and the American Nurses Credentialing Center (ANCC) to provide continuing education for the healthcare team.

Credit Designation Statements

Accreditation Council for Pharmacy Education (ACPE) A maximum of 1.0 hour of knowledge-based CE credit can be earned by successfully completing this live activity. Pharmacists should claim only the credit commensurate with the extent of their participation in the activity. CE credit information, based on verification of live attendance, will be provided to NABP within 60 days after the activity completion. 2020 Universal Activity Number (UAN) JA0000358-0000-20-038-L04-P
American Medical Association (AMA) The University of Wisconsin-Madison ICEP designates this live activity for a maximum of 1.0 AMA PRA Category 1 Credit™. Physicians should claim only the credit commensurate with the extent of their participation in the activity. American Nurses Credentialing Center (ANCC) The University of Wisconsin-Madison ICEP designates this live activity for a maximum of 1.0 ANCC contact hour. American Psychological Association (APA) Continuing Education (CE) credits for psychologists are provided through the co-sponsorship of the American Psychological Association (APA) Office of Continuing Education in Psychology (CEP). The APA CEP Office maintains responsibility for the content of the programs. ASWB Approved Continuing Education (ACE) As a Jointly Accredited Organization, the University of Wisconsin-Madison ICEP is approved to offer social work continuing education by the Association of Social Work Boards (ASWB) Approved Continuing Education (ACE) program. Organizations, not individual courses, are approved under this program. State and provincial regulatory boards have the final authority to determine whether an individual course may be accepted for continuing education credit. University of Wisconsin-Madison ICEP maintains responsibility for this course. Social workers completing this course receive 1.0 live continuing education credits. AAPA Credit Designation Statement The University of Wisconsin-Madison ICEP has been authorized by the American Academy of PAs (AAPA) to award AAPA Category 1 CME credit for activities planned in accordance with AAPA CME Criteria. This activity is designated for 1 AAPA Category 1 CME credits. Approval is valid until 6/30/2022. PAs should only claim credit commensurate with the extent of their participation. Continuing Education Units The University of Wisconsin-Madison ICEP, as a member of the University Professional & Continuing Education Association (UPCEA), authorizes this program for 0.10 continuing education units (CEUs) or 1 hour.

open to all
health science
faculty, practicing
professionals & others



School of Pharmacy
UNIVERSITY OF WISCONSIN-MADISON



School of Nursing
UNIVERSITY OF WISCONSIN-MADISON



School of
Veterinary Medicine
UNIVERSITY OF WISCONSIN-MADISON



School of Medicine
and Public Health
UNIVERSITY OF WISCONSIN-MADISON