

# Wisconsin Society of Pharmacy Students



**General Meeting**

**March 14<sup>th</sup>, 2016**

**5:30 pm**

# Agenda for Today

- Announcements
- Executive Board Elections
- GUEST SPEAKER: Nick Ladell
  - The Future of Ambulatory Care
- Thank You “Beary” Much Award
- Adjourn

# APhA Annual 2016 Baltimore, Maryland



# APhA Annual National Patient Counseling Competition



Ranked in  
the Top 10  
in the  
NATION!



# ASHP Event Highlight

## ASHP Clinical Skills Workshop 101 & 102

- **Part 1: April 5<sup>th</sup> @ 6:30pm**
  - Learn some insider tips on an ASHP patient case, grading rubrics, resource overview, and more
  - Take home a past ASHP patient case to work on with your partner
- **Part 2: April 20<sup>th</sup> @ 6pm**
  - Give a 2 minute presentation to a RPh with feedback
  - DPH 1-3 specific small group case discussion and review of the answer key
- Sign Up TODAY: [Click Here](#)



Questions? Email [mlfrey@wisc.edu](mailto:mlfrey@wisc.edu) or [jean.doh@wisc.edu](mailto:jean.doh@wisc.edu)

# Generation Rx

Preventing the Misuse and Abuse  
of Prescription Medications

---



- High School Presentations:
  - April 20<sup>th</sup> and 21<sup>st</sup> at La Follette High School
  - Potential Dates (depending on enough interest)
    - April 20<sup>th</sup> and 21<sup>st</sup> at Monona Grove
    - April 29<sup>th</sup> at Madison Memorial



# WSPS Newsletter

Wisconsin Society of Pharmacy Students

Issue #3, Winter/Spring 2016

## WSPS NEWSLETTER

WSPS/PAA Golf Outing

June 17<sup>th</sup>, 2016



*Blackhawk Country Club, Madison WI*

WSPS is pairing up with the Pharmacy Alumni Association this year for it's annual golf outing! Save the date of June 17<sup>th</sup>, 2016 to come and golf! It will be located at the Blackhawk Country Club in Madison right down the street from the pharmacy school. So come out and golf and have some fun! More details will follow.

### Summer/Fall 2015

#### Table of Contents:

Operation Diabetes	Pg. 2
Operation Heart	Pg. 2
Operation Airways	Pg. 3
Operation Self Care	Pg. 3
Operation Immunization	Pg. 4
Generation Rx	Pg. 4
<u>MedDrop</u>	Pg. 5
Organ Donation Awareness	Pg. 5
<u>MEDIC</u>	Pg. 6
Personal Health Partners	Pg. 6

**March 2016  
edition is  
live!**

- <https://pharmacy.wisc.edu/wspslinksresources>
- Check it out and see all the amazing things our organization is doing!



# WSPS/PAA Golf Outing!

**SAVE THE DATE: June 17<sup>th</sup>, 2016**

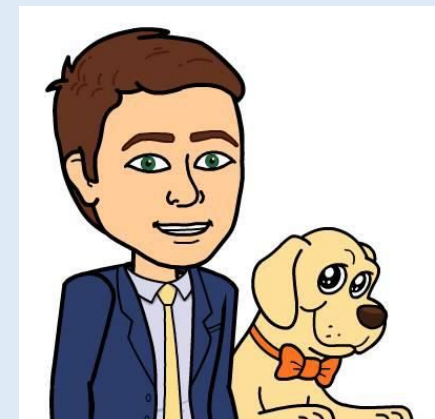
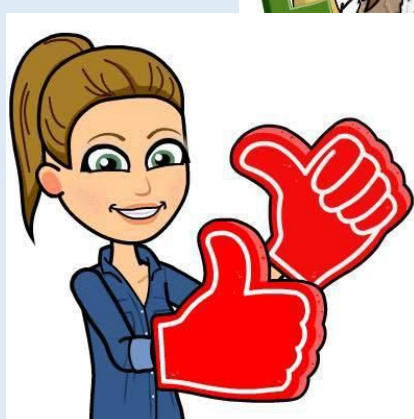
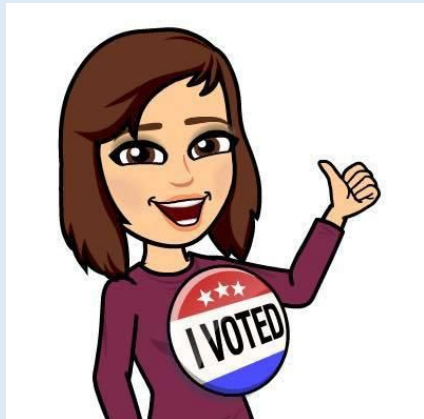
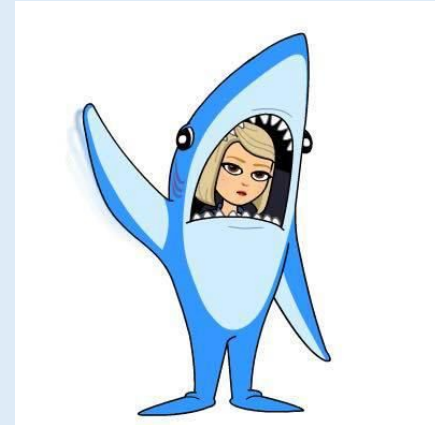
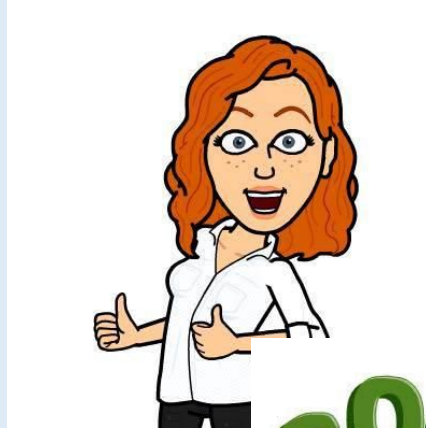
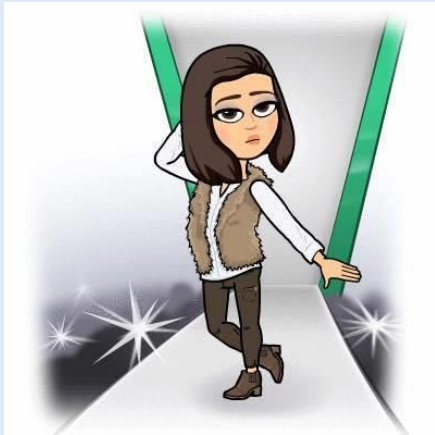
- Who: Pharmacy Alumni Association, WSPS, and pharmacists
- What: This is a fundraiser for both PAA and WSPS, the money from this comes to support our student organization, PAA and scholarships for students
- Where: Blackhawk Country Club in Madison!
- Why: Help raise money for our students, AND make connections that may be helpful in the long run, plus you get to run awesome fundraiser games!
- <https://pharmacy.wisc.edu/2016-paawsp-scholarship-golf-outing>





# Your Current Exec Board

## *Bitmoji Edition*



# Welcome Nick!

Nick Ladell

Director of Pharmacy at Aurora Health Care



## **“The Future of Ambulatory Care”**

Thank You “Beary” Much Award





# Thank You “Beary” Much Award

## Member of the Meeting Award

This DPH-1 member has played a large role in preparing a presentation on healthy aging with fellow members. She has also participated in multiple ODA bone marrow drives.





# Thank You “Beary” Much Award



**Nicole Haebig**  
**DPH-1**



**Thank you  
Nicole!!**

# WSPS Meetings & Events

- **WSPS General Meetings**

- ~~Wednesday, February 17<sup>th</sup>~~
- ~~Monday, March 14<sup>th</sup>~~
- Wednesday, April 6<sup>th</sup>
- Wednesday, April 27<sup>th</sup>

- **WSPS Board Meeting**

- Following the April 27<sup>th</sup> General Meeting

- **WSPS Events**

- Health and Wellness Fairs
- Rx Factor
- White Coat Ceremony



CHECK  
THE  
WEBSITE!

# State & National Meetings

- ~~2/11: PSW Legislative Day~~
- ~~3/4 – 3/7: APhA Annual Meeting~~
- 4/5 – 4/6: PSW Educational Conference
- 6/11 – 6/15: ASHP Summer Meeting

# WSPS Board Applications

- **Co-Directors of Community Outreach**
  - 1/25 - 2/12
- **Executive Council**
  - 2/17 – 3/4
- **Patient Care Projects**
  - 3/14 – 3/28
- **Remaining Board Positions**
  - 4/6 – 4/18



CHECK  
THE  
WEBSITE!

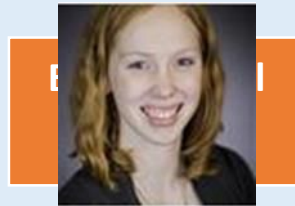


# WSPS Transition

## Patient Care Positions

**March 14<sup>th</sup> Meeting**

**Application Open: 3/14 – 3/28**



President Elect

Secretary

Treasurer Elect

Committees

Student Senate Rep

Operation Heart  
Operation Airways  
Operation Self-Care  
Operation Immunizations  
Operation Diabetes  
MEDiC

Med Drop  
Generation Rx  
Personal Health Partners/PSW United  
Way Liaison  
Organ Donation Awareness

Team  
Community  
Outreach

# WSPS CO Board Applications

- Applications sent via e-mail to WSPS list-serv
- Each Community Outreach Co-Chair position will have a SEPARATE application
  - Make sure you are choosing the right one!
- **YOU MAY APPLY FOR MORE THAN ONE POSITION**
  - **Need a separate application for each position**
- Voting will be done by the 2015-2016 (current) Executive Council
  - Order of selecting positions are specified on the applications
- **Due back to Teresa via e-mail by date and time specified**

# And the winner is...

Secretary/ Historian

Student Senate Representative

Treasurer-elect

President-elect

**Newly Elected 2016-2017 WSPS Exec Board**  
**Meet at the front of the room for a photo following the meeting!**

# THANK YOU FOR COMING!

**Applications for Patient Care Positions sent out tonight**

**Don't forget your food ticket!**

**Nominate for Thank You "Beary" Much Award!**

**NEXT MEETING**

**WEDNESDAY, APRIL 6<sup>TH</sup> AT 5:45 PM**

